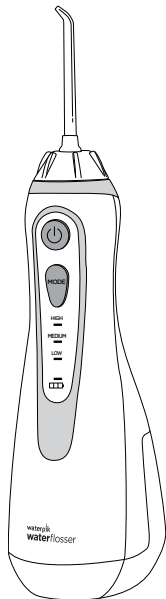


waterpik®



Waterpik® Water Flosser Model WP-500 Series

**Hydropropulseur Waterpik®
Modèle WP-500 Série**

IMPORTANT SAFEGUARDS

IMPORTANT SAFEGUARDS

When using electrical products, especially when children are present, basic safety precautions should always be followed, including the following:

READ ALL INSTRUCTIONS BEFORE USING.

DANGER:

To reduce the risk of electrocution:

- Do not handle charger with wet hands.
- Do not place charger in or drop charger into water or other liquid.
- Check the charger cord for damage before the first use and during the life of the product.

WARNING:

To reduce the risk of burns, electrocution, fire, or injury to persons:

- Do not plug this device into a voltage system that is different from the voltage system specified on the device or charger.
- If product is opened/disassembled for ANY reason, warranty is VOID.
- Do not use this product if it has a damaged cord or plug, if it is not working properly, if it has been dropped or damaged, or dropped into water. Contact Water Pik, Inc. or your local distributor which can be found at www.waterpik.com.
- Do not direct water under the tongue, into the ear, nose or other delicate areas. This product is capable of producing pressures that may cause serious damage in these areas.
- Do not direct water into the nose or ear. The potentially deadly amoeba, *Naegleria fowleri*, may be present in some tap water or unchlorinated well water and may be fatal if directed into these areas.

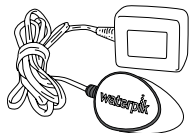
- Use this product only as indicated in these instructions or as recommended by your dental professional.
- Magnetic field: Pacemakers and similar implanted medical devices may be affected by magnet.
- Only use tips and accessories that are recommended by Water Pik, Inc.
- Do not drop or insert any foreign object into any opening on the product.
- Keep charging unit and cord away from heated surfaces.
- Do not use this product outdoors or operate where aerosol (spray) products are being used or where oxygen is being administered.
- Do not use iodine, saline (salt solution), or water insoluble concentrated essential oils in this product. Use of these can reduce product performance and will shorten the life of the product. Use of these products may void warranty.
- Remove any oral jewelry prior to use of this product.
- Do not use if you have an open wound on your tongue or in your mouth.
- If your physician advised you to receive antibiotic premedication before dental procedures, you should consult your dentist before using this instrument or any other oral hygiene aid.
- Close supervision is necessary when this product is used by, on, or near children or invalids.

SAVE THESE INSTRUCTIONS.

TABLE OF CONTENTS

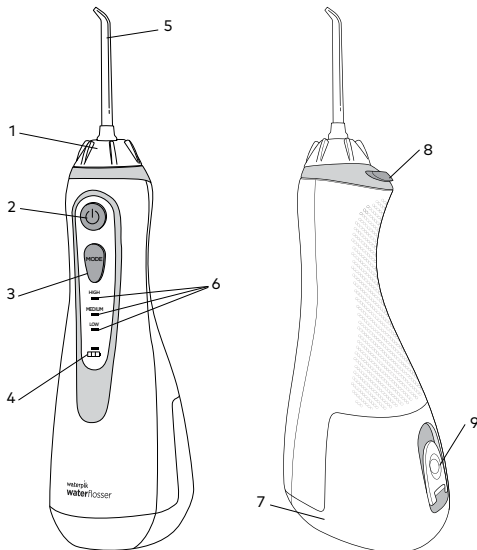
Product Description	5
Getting Started	6
Cleaning and Troubleshooting Your Waterpik® Water Flosser	9

1. Tip rotator
2. Power button
3. Mode/pressure button
4. Battery charge indicator
5. Tip
6. LED pressure indicators
7. Reservoir
8. Tip eject button
9. Reservoir fill door

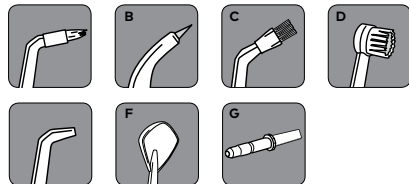


Charger

- Water Pik PN 20018701-1 (White)
- Water Pik PN 20018701-4 (Black)
- Water Pik PN 20018701-7 (Pink)
- Water Pik PN 20018701-8 (Teal)
- Water Pik PN 20018701-14 (Blue)
- Water Pik PN 20018701-15 (Orchid)



NOT ALL TIPS INCLUDED IN ALL MODELS



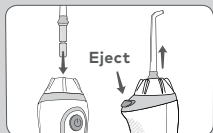
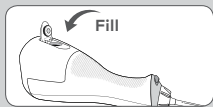
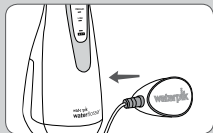
*Replace Every 3 months

**Replace Every 6 months

TIPS

- A. Orthodontic Tip***
- Braces/General Use
- B. Pik Pocket® Tip***
- Periodontal Pockets/Furcations
- C. Plaque Seeker® Tip***
- Implants/Crowns/Bridges/Retainers/General Use
- D. Toothbrush Tip***
- General Use
- E. Classic Jet Tip****
- General Use
- F. Tongue Cleaner****
- Fresher Breath
- G. Travel Plug**
- Keeps excess water from draining out while traveling

GETTING STARTED



Charging Unit Prior to First Use

Plug the power cord into the wall and place the magnetic charger on the front of the unit for approximately 4 hours (see image). The charge indicator on the handle will flash when charging and will turn off when the unit is fully charged. A full charge will last for approximately 1 week of typical use. When the batteries are in need of charging (approximately 30% charge left) the charge indicator light will blink 8 times quickly after use to indicate that you should recharge the unit. A complete recharge will take 3-4 hours. If you use your Water Flosser once a day or less, it is recommended you charge it once a week. If you use it twice a day or more, charge the unit more frequently.

Filling the Reservoir

Remove the magnetic charger from the unit prior to filling reservoir and product use. Lift flip top on reservoir and fill the reservoir with lukewarm water.

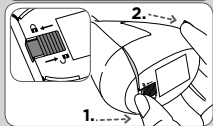
Inserting and Removing Tips

Insert tip into the center of the knob at the top of the Water Flosser handle. Press firmly until the tip clicks into place. To remove the tip from the handle, press the tip eject button and pull tip from the handle.

CAUTION: Do not press tip eject button while unit is running.

Adjusting the Pressure Setting

You can adjust the pressure setting on your Water Flosser by pressing the mode button on the handle. Start with the lowest setting and increase to your liking.



Recommended Technique

Lean low over sink and place tip in mouth. Aim the tip toward gumline, and turn the unit ON (I).

For best results, start with the back teeth and work toward the front teeth. Glide tip along gumline and pause briefly between teeth. Continue until you have cleaned the inside and outside of both the upper and lower teeth.

Direct the jet stream at a 90-degree angle to your gumline. **Slightly close lips to avoid splashing** but allow water to flow freely from mouth into the sink. Keep unit upright during use for best results.

When Finished

Turn the unit off. Empty any liquid left in the reservoir.

If desired, the reservoir may be removed from the power handle by sliding the reservoir release latch to the unlock position(1) and then sliding the reservoir down towards the base of the unit(2).

NOTE: NOT ALL TIPS INCLUDED WITH ALL MODELS.

TIP USAGE

Pik Pocket® Tip

The Pik Pocket® tip is specifically designed to deliver water or anti-bacterial solutions deep into periodontal pockets.

To use the Pik Pocket® tip, **set the unit to the lowest pressure setting.** Place the soft tip against a tooth at a 45-degree angle and gently place the tip under the gumline, into the pocket.

Tongue Cleaner Tip

Set to lowest pressure setting, place tip in the center/middle of your tongue about half way back. Pull forward with light pressure. Increase pressure as you prefer.

Orthodontic Tip

To use the orthodontic tip, gently glide tip along gumline, pausing briefly to lightly brush area between teeth and all around orthodontic bracket, before proceeding to the next tooth.

Toothbrush Tip

Place the toothbrush tip in mouth with the brush head on the tooth at the gumline. The toothbrush tip can be used with or without toothpaste. Using a **light pressure** (bristles should not bend) massage the brush back and forth with very short strokes – much like you would with a manual toothbrush.

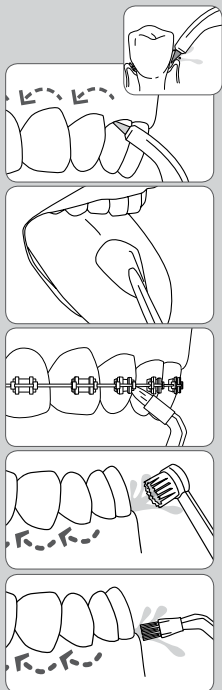
Plaque Seeker® Tip

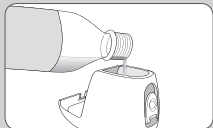
To use the Plaque Seeker® tip, place the tip close to the teeth so that the bristles are gently touching the teeth. Gently glide tip along gumline, pausing briefly between teeth to gently brush and allow the water to flow between the teeth.

Travel Water Plug

When traveling, place travel plug in unit to keep excess water from draining out.

NOTE: Do NOT run unit while travel water plug is in unit.





Using Mouthwash and Other Solutions

Your Waterpik® Water Flosser can be used to deliver mouthwash and antibacterial solutions. For ease of adding other solutions remove the reservoir (see “When Finished” section) and add from top opening on reservoir. If you are adding additional water you may replace the reservoir and fill reservoir fully with the fill door. After using any special solution, rinse unit to prevent clogging by partially filling reservoir with warm water and running unit with tip pointed into sink until unit is empty.



Cleaning

Never immerse unit in water. Before cleaning, unplug from the electrical outlet. Clean the product when necessary by using a soft cloth and mild non-abrasive cleanser to wipe exterior.

The water reservoir is removable for easy cleaning and is top rack dishwasher safe. It is recommended that the reservoir is removed and cleaned weekly.

Removing Hard Water Deposits / General Cleaning

Hard water deposits may build up in your unit, depending on the mineral content of your water. If left unattended, it can hinder performance. Cleaning internal parts: add 1 tablespoon of white vinegar to a full reservoir of warm water. Point the handle and tip into sink. Turn unit ON and run until reservoir is empty. Rinse by repeating with a full reservoir of clean warm water.

This process should be done every 1 to 3 months to ensure optimal performance.

Battery Care and Disposal

If the Water Flosser is to be stored for an extended period of time (six months or more), be sure to fully charge it prior to storage. The unit contains a Nickel Metal Hydride battery. At the end of the battery life, please recycle the unit at your nearest recycle center per local or state requirements. The battery is not replaceable.





**Water Pik, Inc. a subsidiary of
Church and Dwight, Co. Inc.**

1730 East Prospect Road

Fort Collins, CO 80553-0001 USA

www.waterpik.com

Waterpik® is a trademark of Water Pik, Inc. registered in Argentina, Australia, Benelux, Brazil, Canada, Chile, China, Colombia, Czech Republic, Denmark, EU, Finland, France, Germany, Hong Kong, Hungary, India, Israel, Italy, Japan, Kazakhstan, Korea, Malaysia, Mexico, New Zealand, Norway, Pakistan, Panama, Philippines, Poland, Russian Federation, Saudi Arabia, Singapore, South Africa, Spain, Sweden, Switzerland, Taiwan, Thailand, Turkey, Ukraine, United Kingdom, United States and Vietnam.

Waterpik® (stylized) is a trademark of Water Pik, Inc. registered in Australia, Brazil, Canada, China, EU, Hong Kong, India, Israel, Japan, Korea, Malaysia, Mexico, Philippines, Russian Federation, Saudi Arabia, South Africa, Switzerland, Taiwan, Thailand, Trinidad & Tobago, Ukraine, United States, and Vietnam.

Waterflosser® (stylized) is a trademark of Water Pik, Inc. registered in Brazil, Canada, China, Japan, Mexico, Switzerland and the United States.

Pik Pocket® is a trademark of Water Pik, Inc. registered in Canada and the United States.

Plaque Seeker® is a trademark of Water Pik, Inc. registered in Canada, China, EU, Japan, and the United States.

Designed and Tested in the USA. Made in China.

Waterpik® est une marque de commerce de Water Pik, Inc. déposée en Argentine, en Australie, en Benelux, au Brésil, au Canada, au Chili, en Chine, en Colombie, en République Tchèque, en Danemark, dans l'UE, en Finlande, en France, en Allemagne, à Hong Kong, en Hongrie, en Inde, en Israël, en Italie, au Japon, au Kazakhstan, en Corée, en Malaisie, au Mexique, en Nouvelle-Zélande, en Norvège, au Pakistan, au Panama, aux Philippines, en Pologne, dans la Fédération de Russie, en Arabie saoudite, à Singapour, en Afrique du Sud, en Espagne, en Suède, en Suisse, à Taïwan, en Thaïlande, en Turquie, en Ukraine, au Royaume-Uni, aux États-Unis et au Vietnam.

Waterpik® (stylisé) est une marque de commerce de Water Pik, Inc. déposée en Australie, au Brésil, au Canada, en Chine, dans l'UE, à Hong Kong, en Inde, en Israël, au Japon, en Corée, en Malaisie, au Mexique, aux Philippines, dans la Fédération de Russie, en Arabie saoudite, en Afrique du Sud, en Suisse, à Taïwan, en Thaïlande, à Trinité-et-Tobago, en Ukraine, aux États-Unis et au Vietnam.

Waterflosser® (stylisé) est une marque de commerce de Water Pik, Inc. enregistrée au Brésil, au Canada, en Chine, au Japon, au Mexique, en Suisse et aux États-Unis.

Pik Pocket® est une marque de commerce de Water Pik, Inc. enregistrée au Canada et aux États-Unis.

Plaque Seeker® est une marque de commerce de Water Pik, Inc. déposée au Canada, en Chine, au Japon, dans l'UE et aux États-Unis.

Conçu aux É.-U. Fabriqué en Chine.